

Chapter 1

Introduction of the Association of North East Asia Regional Governments(NEAR)

Section 1 History • 027

Section 2 Principles • 028

Section 3 Official Emblem • 028

Section 4 NEAR Membership • 029

Section 5 List of NEAR Chairs • 032



The Association of
North East Asia Regional Governments

Chapter 1 Introduction of the Association of North East Asia Regional Governments(NEAR)

Section 1 History

1. Foundation Background

A. Replacing Confrontation and Tension with Friendship and Cooperation

Establishing a close cooperation with countries and regions around the world has become a critical issue for securing national competitiveness and attaining regional development as the era has come where more and more people travel across national borders thanks to relaxation of political tension and development of transportation and communication technologies.

B. Increasing Call for Solidarity in Northeast Asia as the Region Emerges as a New Global Growth Engine

Northeast Asia, including China, Japan, two Koreas, Mongolia and Russia, is emerging as one of the three global economic pillars with unbounded potential. Based on close historical and geographical relationship among the countries, there is growing expectation for joint development of Northeast Asia through increased mutual exchange and cooperation activities in various fields such as culture, science, economy, environment and tourism.

C. Growing Need for Establishing an International Organization as the Center for Promoting Exchange and Cooperation in the 21st Century of Northeast Asia

To respond actively to the changes of the times and to promote joint prosperity and development toward the coming 21st century Pacific Rim Era, the formation of an instrument is required that comprehends the region of Northeast Asia as the hub to lead exchanges and cooperation of the Northeast Asian region

2. Foundation History

- At the 3rd Meeting of Governors of Northeast Asian Regions, a conference which had been held since 1993 among governors from four countries including China, Japan, Korea and Russia, heads of regions agreed that the 1996 meeting would be hosted by Gyeongsangbuk-do Province, Korea and that an international organization would be created based on their regular meetings
- The Association of North East Asia Regional Governments(NEAR) was founded as an international organization along with the adoption of NEAR Chapter at the 4th Meeting of Governors of Northeast Asian Regions.

Section 2 Principles

To contribute to co-development of the Northeast Asian region and global peace by promoting exchange and cooperation in every field, including administrative governance, economy and culture based on the spirit of reciprocity and equity

Section 3 Official Emblem

1. History of the Emblem

Existing emblem of NEAR Secretariat



Emblem of NEAR



- At the 5th General Assembly in September 2004, the agenda was passed to adopt an emblem proposed by Toyama Prefecture(Japan) and Heilongjiang Province(China) and the decision was made that the final design would be selected at the 6th General Assembly in Busan, Korea.

- At the 5th Working Committee held in November 2005 in Busan, “the Emblem Committee” was created after the discussion on the adoption procedure.
- The 1st Emblem Committee was held in May 2006. It was decided that the Secretariat would propose the design of the emblem based on its existing logo and opinions of the Committee members.
- In August 2006, the 2nd Emblem Committee reviewed and finalized(in writing) the design suggested by the Secretariat and decided to submit it to the General Assembly. The Emblem was adopted at the 6th General Assembly held in September in Busan.

《 Members of the Emblem Committee 》

China(Heilongjian Province : Hongpeng Yang), Japan(Toyama Prefecture : Ichiro Shiroki), Korea(Busan Metropolitan City : Jong Il Ahn), Mongolia(Tuv Province : Namnansuren), Russia(Khabarovsk Territory : Besedina)

2. The Meaning of the Emblem

- The emblem represents the bright and prosperous future of Northeast Asia emerging as the center of the 21st century world. The Northeast Asian region is marked in green on a spherical world map that signifies an open global village.
- NEAR is the abbreviation of “The Association of North East Asia Regional Governments” with the word itself meaning close intimacy.

Section 4 NEAR Membership

1. Qualification and Current Status

A. Qualification

- Regional governments that share the founding purpose of NEAR, located in the Northeast Asian region, including the People’s Republic of China, Japan, the Republic of Korea, the Democratic People’s Republic of Korea, Mongolia and the Federation of Russia

B. Current Membership

- 1996(founding year) : 29 regional governments from four countries, including China, Japan, South Korea and Russia
- 2000 : Membership expanded to 40 regional governments from six countries with the accession of new members from North Korea, Mongolia and Russia
- 2006 : Membership expanded to 65 regional governments from six countries with the accession of new members from China, South Korea, Mongolia and Russia at the 6th General Assembly in Busan
- 2008 : Membership expanded to 69 regional governments from six countries with the accession of new members from South Korea(Incheon Metropolitan City, Daejeon Metropolitan City, Gwangju Metropolitan City, Ulsan Metropolitan City) and Russia(Magadan Region)

《 NEAR Members》

December 2008

Country	No.	Member Regional Government (Year of Accession)
South Korea	15	Gyeongsangbuk-do Province('96), Gyeongsangnam-do Province('96), Gangwon-do Province('96) Gyeonggi-do Province('96), Chungcheongbuk-do Province ('96), Chungcheongnam-do Province(96), Jeollabuk-do Province('96), Jeollanam-do Province('96), Jeju Special Self-governing Province('96), Busan Metropolitan City('00), Daegu Metropolitan City('06), Incheon Metropolitan City('08), Daejeon Metropolitan City('08), Gwangju Metropolitan City('08), Ulsan Metropolitan City('08)
China	6	Heilongjian Province('96), Henan Province('96), Shandong Province('96), Ninxia Hui Autonomous Region('00), Hubei Province('06), Hunan Province('06)
Japan	10	Niigata Prefecture('96), Toyama Prefecture('96), Tottori Prefecture('96), Shimane Prefecture('96) Hyogo Prefecture('96), Kyoto Prefecture('96), Aomori Prefecture('96), Ishikawa Prefecture('96), Fukui Prefecture('96), Yamagata Prefecture('98)

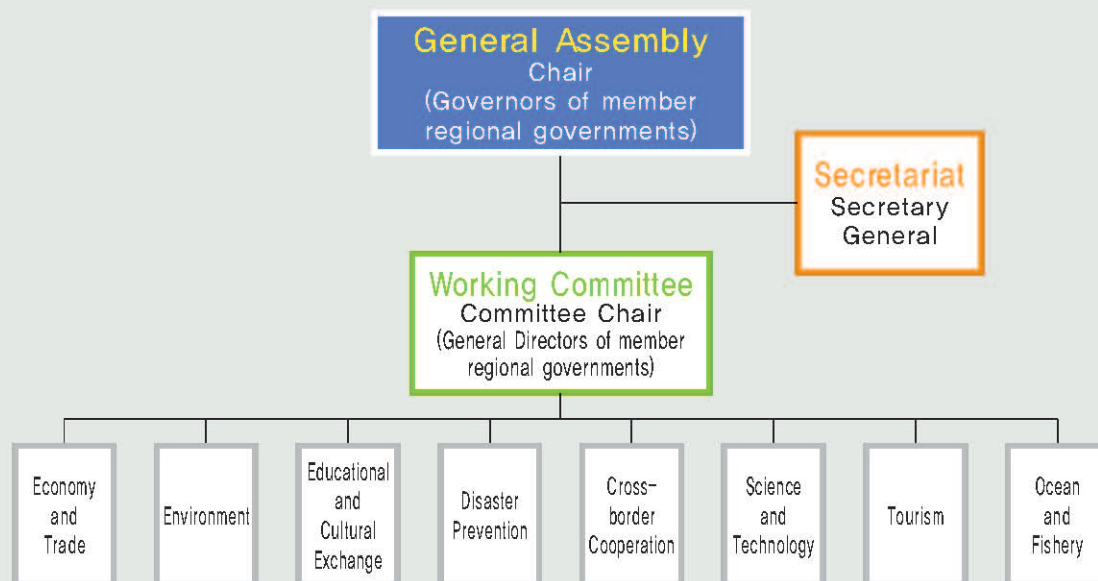
Country	No.	Member Regional Government (Year of Accession)
Mongolia	22	Tuv Province('98), Selenge Province('02), Ulaanbaatar City('06), Dornod Province('06), Sukhbaatar Province('06), Khentii Province('06), Dornogovi Province('06), Dundgovi Province('06), Umnugovi Province('06), Bulgan Province('06), Uvurkhangai Province('06), Bayankhongor Province('06), Arkhangai Province('06), Khuvsgul Province('06), Zavkhan Province('06), Govi-Altai Province('06), Khovd Province('06), Uvs Province('06), Bayanulgi Province('06), Orkhon Province('06), Govisumber Province('06), Darkhan Province('06)
Russia	14	Khabarovsk Territory('96), Sakhalin Region('96), Amur Region('96), Khamchanka Territory('96), Irkutsk Region('96), Republic of Sakha(Yakutia)('96), Republic of Buryatia('96), Chita Region('96), Primorsky Territory('98), Tomsk Region('06), Krasnoyarsk Territory('06), Republic of Tyva('06), Altai Territory('06), Magadan Region('08)
North Korea	2	Hamgyeongbuk-do Province('02), Rasun City('02)



2. Organizational Structure

- NEAR consists of General Assembly, Working Committee, Sub-Committees and the Secretariat

《 Organizational Chart 》



Section 5 List of NEAR Chairs

Chairmanship	Period	Chair, Chair Region	Country
1 st	'96.9 ~ '98.10	Governor Eui-Geun Lee, Gyeongsangbuk-do Province	Korea
2 nd	'98.10 ~ '00.9	Governor Yutaka Nakaoki, Toyama Prefecture	Japan
3 rd	'00.9 ~ '02.9	Governor Toshizo Ido, Hyogo Prefecture	Japan
4 th	'02.9 ~ '02.9	Governor Victor I. Ishaev, Khabarovsk Territory	Russia
5 th	'02.9 ~ '04.9	Governor Zhang Zuo Ji, Heilongjiang Province	China
6 th	'04.9 ~ '06.9	Governor Nam-Sik Hur, Busan Metropolitan City	Korea
7 th	'06.9 ~ '08.9	Governor Han Yu Qun, Governor Jiang Daming, Shandong Province	China
8 th	'08.9 ~ '10.9	Governor Moon-Soo Kim, Gyeonggi-do Province	Korea